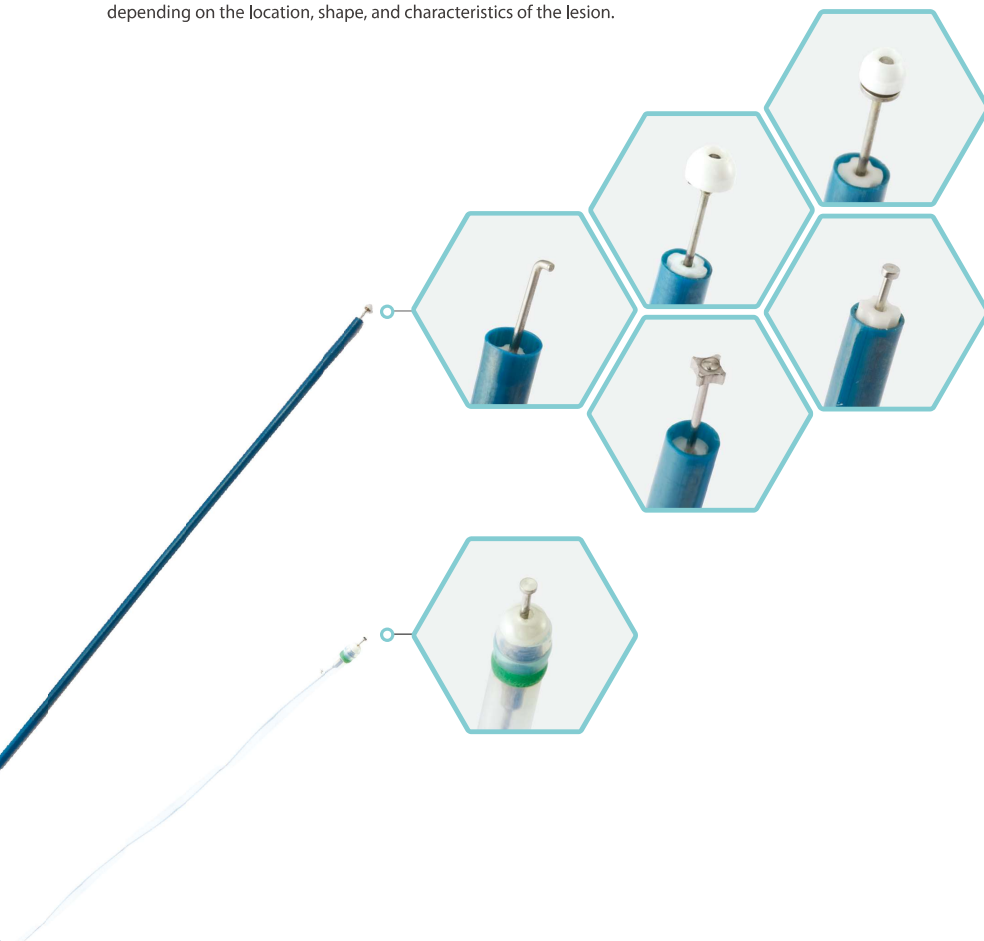


# 01 ESD

## ClearCut Knife

### We provide total solution to ESD

FINEMEDIX developed the endoscopic knives required for endoscopic submucosal dissection (ESD) with its own technology. We have a wide range of ESD knives suitable for different procedures depending on the location, shape, and characteristics of the lesion.

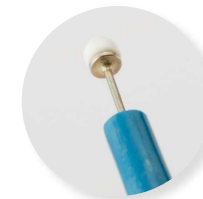


## ClearCut Knife O / O2 Type

### Insulated Ceramic Head

Safe procedure is possible with insulated ceramic head at the tip

[ O Type ]



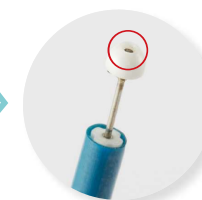
[ O2 Type ]



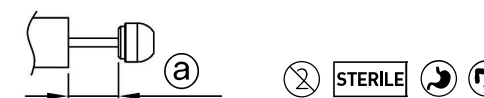
	O Type	O2 Type
Ceramic Head	Φ 1.85mm	Φ 2.2mm
Cutting Tip	Circle-shaped	Cross-shaped
Feature	Small ceramic head for safe operation Convenient for incision of lesions with severe fibrosis	With cutting tips in 4 directions Easy Marking, Incision, and Dissection

### Open conductive electrode for marking and hemostasis during ESD procedures

The groove on the ceramic head's upper end enables marking and fine bleeding control.



### Specification



Type	Model	Knife Length(a)	Working Length	Sheath O.D	Feature
O Type	FM-EK0001(1820)A	4.0mm	1,820mm	Φ 2.3mm	Ceramic Head Φ 1.85 Cutting Tip : Circle
	FM-EK0001(2300)A		2,300mm		
	FM-EK0001-S(1820)A	5.0mm	1,820mm		
	FM-EK0001-S(2300)A		2,300mm		
O2 Type	FM-EK0001(1820, O2)A	4.0mm	1,820mm		Ceramic Head Φ 2.2 Cutting Tip : Cross
	FM-EK0001(2300, O2)A		2,300mm		
	FM-EK0001-S(1820, O2)A	5.0mm	1,820mm		
	FM-EK0001-S(2300, O2)A		2,300mm		

Packaging : 5ea / box

## I Type



### Disc-shaped tip

The disc-shaped tip prevents slipping and provides effective marking and hemostasis. Easy to lift fibrous tissue.

### Easy two-step operation and tissue protection

Safe operation in case of contact with tissue with a protruding silicone cover. Excellent straightness

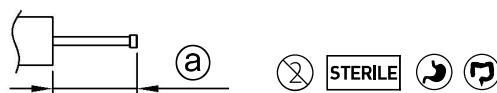
### Various knife lengths

Various knife lengths of 1mm, 1.5mm, 2mm, 3mm

### Irrigation Port

Water irrigation is possible without changing the devices during the procedure.

## Specification



Type	Model	Length(ⓐ)	Working Length	Sheath O.D
I - Type	FM-EK0003-1(1820)A	1.0mm	1,820mm	Φ 2.3mm
	FM-EK0003-1(2300)A		2,300mm	
	FM-EK0003-1.5(1820)A	1.5mm	1,820mm	
	FM-EK0003-1.5(2300)A		2,300mm	
	FM-EK0003-2(1820)A	2.0mm	1,820mm	
	FM-EK0003-2(2300)A		2,300mm	
	FM-EK0003-3(1820)A	3.0mm	1,820mm	
	FM-EK0003-3(2300)A		2,300mm	

Packaging : 5ea / box

## L Type



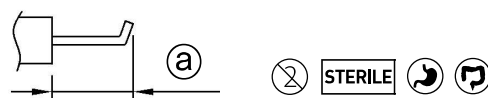
### L-shaped tip

Suitable for hanging tissues and separating mucous membranes and muscle layers. Convenient for lateral and vertical incisions. Used for lesions with severe fibrosis conveniently

### Tip rotation function

1:1 rotation with the handle

## Specification



Type	Model	Length(ⓐ)	Working Length	Sheath O.D
L-Type	FM-EK0002(1820)A	4.0mm	1,820mm	Φ 2.3mm
	FM-EK0002(2300)A		2,300mm	

Packaging : 5ea / box

## Q Type



### 4 angled tips

4 angled tips for all marking, incision, dissection and hemostasis. Easy to cut in any direction without the need for rotation of the shaft

### Large coagulation area

Moderate bleeding can be controlled due to the wide electrocoagulation area



## Specification

Type	Model	Length(ⓐ)	Working Length	Sheath O.D
Q-Type	FM-EK0004(1820)A	4.0mm	1,820mm	Φ 2.3mm
	FM-EK0004(2300)A		2,300mm	

Packaging : 5ea / box

## J Type



### Water Jet function

It is possible to inject physiological saline without changing the accessories during the procedure using the water port. And Submucosal layer Lifting and Flushing are possible

### Disc-shaped tip

Disc-shaped tip prevents slipping and facilitates lifting of fibrous tissue.

### Outstanding endoscopic visibility

Green marking on the tip enhances endoscopic visibility of the tip of the sheath

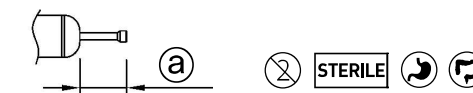
### Easy 2 step operation and tissue protection

Round ceramic cover for safe handling, even in contact with tissue

### Various knife lengths

Various knife lengths of 1mm, 1.5mm, 2mm, 3mm

## Specification



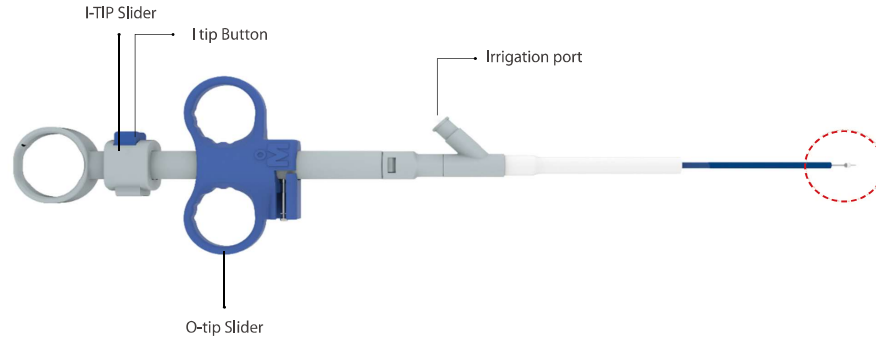
Type	Model	Length(ⓐ)	Working Length	Sheath O.D
J-Type	FM-EK0005-1(1820)A	1.0mm	1,820mm	Φ 2.35mm
	FM-EK0005-1(2300)A		2,300mm	
	FM-EK0005-1.5(1820)A	1.5mm	1,820mm	
	FM-EK0005-1.5(2300)A		2,300mm	
	FM-EK0005-2(1820)A	2.0mm	1,820mm	
	FM-EK0005-2(2300)A		2,300mm	
	FM-EK0005-3(1820)A	3.0mm	1,820mm	
	FM-EK0005-3(2300)A		2,300mm	

Packaging : 5ea / box

# ClearCut Knife

## H / H2 Type

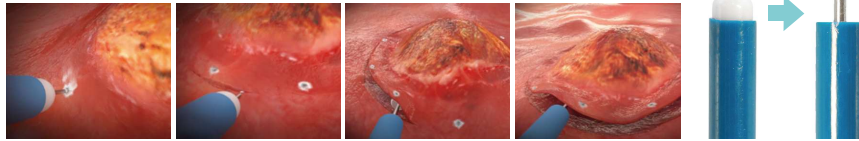
The world's first hybrid knife developed by FINEMEDIX  
Economical ESD Knife with increased user convenience by combining O-tip and I-tip



### Hybrid function

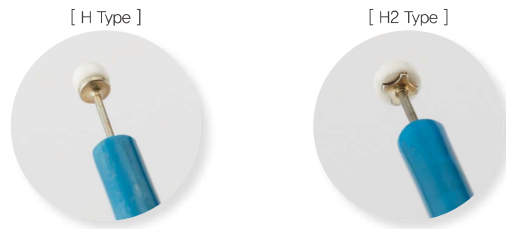
Marking, Incision, Pre-cutting, Dissection and Hemostasis are possible with one ESD Knife

- **I Tip** : Marking, Incision
- **O Tip** : Precutting, Dissection



### O - Tip : Insulated ceramic head

The insulated ceramic head prevents incision in the vertical direction, helping to ensure a safe procedure.

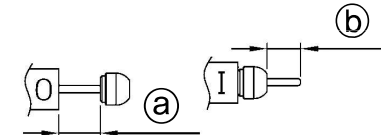
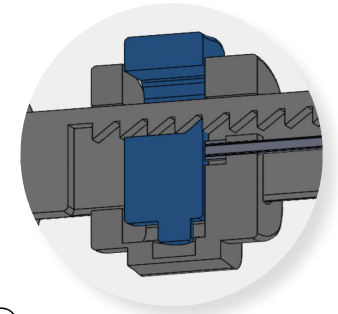


	H Type	H2 Type
Ceramic Head	Φ 1.85mm	Φ 2.2mm
Cutting Tip	Circle-shaped	Cross-shaped
Feature	Small ceramic head for safe operation Convenient for incision of lesions with severe fibrosis	With cutting tips in 4 directions Easy Marking, Incision, and Dissection

### Safety lock system

Safety locking system to prevent malfunction of I tip

Ratchet structure: When the I tip button is pressed, the slider moves.



### Specification

Type	Model	O tip Length (a)	I tip Length (b)	Working Length	Feature	Sheath O.D
H Type	FM-EK0006-4-1(1820)A	4mm	1mm	1,820mm	Ceramic Head Φ 1.85mm Cutting Tip : Circle	Φ 2.3mm
	FM-EK0006-4-2(1820)A		2mm			
	FM-EK0006-4-3(1820)A		3mm			
	FM-EK0006-4-1(2300)A	4mm	1mm	2,300mm		
	FM-EK0006-4-2(2300)A		2mm			
	FM-EK0006-4-3(2300)A		3mm			
H2 Type	FM-EK0006-4-1(1820, H2)A	4mm	1mm	1,820mm	Ceramic Head Φ 2.2mm Cutting Tip : Cross	
	FM-EK0006-4-2(1820, H2)A		2mm			
	FM-EK0006-4-3(1820, H2)A		3mm			
	FM-EK0006-4-1(2300, H2)A	4mm	1mm	2,300mm		
	FM-EK0006-4-2(2300, H2)A		2mm			
	FM-EK0006-4-3(2300, H2)A		3mm			

Packaging : 5ea / box